

CIGAR ACCESSORIES 2019-2020

SINCE 1928

In 1928, intrepid inventor Julius Lowenthal created the world's first semi-automatic lighter – a pioneering mechanism that would change the way we use and understand lighters forever. It was the beginning of a long heritage of innovation and thoughtful design.

Almost a century later, Colibri brings you the same focus that made it a world-renowned brand. Today, Colibri is inspired by a simple ideal—clean and sharp design within an extended product range that includes lighters, cigar cutters, humidors, travel cigar cases and ashtrays. Each Colibri product is purposely designed and engineered to our exacting standards.

COMMITMENT TO QUALITY

Our dedication to quality is reflected in every product that we make; each one individually tested to earn the Colibri hummingbird stamp.

North America

Colibri Group
237 West 37th Street, FL 10
New York, NY 10018 USA
T: 1 (800) 556-7354
F: 1 (401) 434-2067
info@colibri.com

Europe

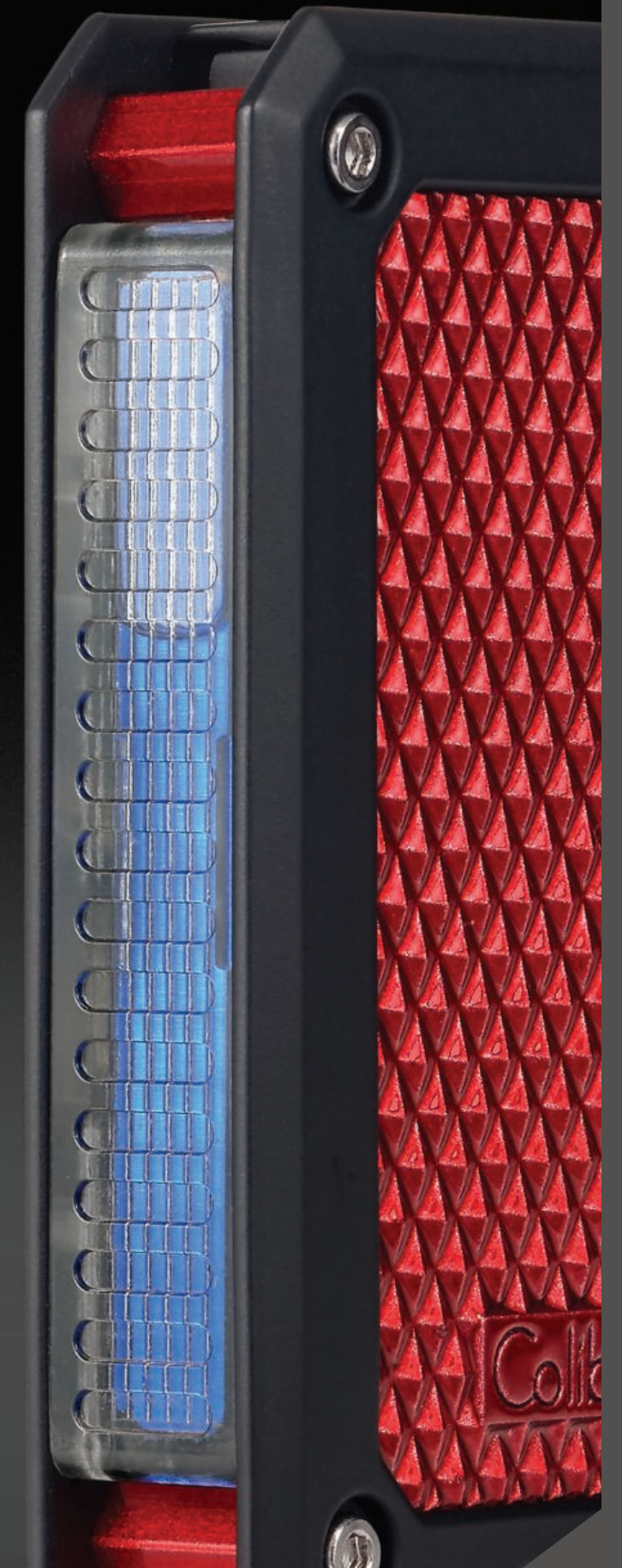
Unitask N.V.
Hovenierstraat 2
Antwerp, BE-2018 Belgium
T: +32 3.232.7676
F: +32 3.225.04.68
colibri@unitask.be

www.colibri.com



CONTENTS

Quasar table lighter	4
Triple-jet flame lighters	6-9
Double-jet flame lighters	10
Single-jet flame lighters	11-15
Soft flame lighters	15-17
Pipe tool	16
Cigar cutters	18-24
Cigar punch	25
Gift sets	26
Holsters, butane + flints	27
Humidors	28
Ashtrays	29
Merchandising	30-31
Accessories summary	32-33
Product care	34-35





QUASAR TABLE LIGHTER

The Quasar Table Lighter is a triple flame lighter with ignition embedded in its design. With fast single-action retracting doors, the lighter provides a steady flame in our signature Quasar design. The lighter's metallic pyramid body highlights elegance alongside its sturdy functionality, and it includes non-slip rubber foot pads that will keep the lighter firmly on your coffee table or desk without scratching the surface. This newest addition to our Quasar series completes the Quasar tabletop set, and is a perfect match with the Quasar table cutter and ashtray.

Quasar Table Lighter

NEW

- triple-jet flame
- large fuel adjuster
- blue fuel gauge
- rubber protection on bottom to prevent surface scratching
- refillable butane



LI710T1

black



LI710T2

silver



LI710T3

gunmetal



LI710T4

red

Table Lighter



QUANTUM

The world's first triple-jet lighter with a V-Cut cigar cutter.
 In an epic union of two of our most popular innovations, the Quantum seamlessly unifies our high performance triple-jet flame system with our most popular cigar cutter ever—the Colibri V-Cut.

Quantum

triple-jet flame
 wind resistant
 integrated V-Cut cigar cutter
 blue fuel window
 altitude tested 10,000 ft.
 (3,048 m)
 leather holster size: extra large







- | | | |
|--|---|--|
| 
LI970C1
metallic black + black | 
LI970C2
polished chrome + black | 
LI970C3
brushed gunmetal + black |
| 
LI970C4
brilliant red + black | 
LI970C5
brilliant blue + black | 
LI970C6
polished gold + black |

Boss

triple-jet flame
 wind resistant
 integrated cigar cutter
 58-ring gauge, cuts up to 60 ring cigar
 stainless steel blades
 blue fuel window
 altitude tested 10,000 ft. (3,048 m)
 leather holster size: extra large



- | | | |
|---|--|---|
| 
LI950T1
metallic black + black | 
LI950T3
brilliant red + black | 
LI950T4
brilliant blue + black |
|  | | |
| LI950T6
brushed gunmetal + black | | |

Quasar Astoria

triple-jet flame
 wind resistant
 integrated cigar cutter
 59-ring gauge stainless steel blades
 blue fuel window
 altitude tested 9,000 ft. (2,743 m)
 leather holster size: extra large



- | | | |
|--|--|---|
| 
LI600C10
black | 
LI600C11
black + polished chrome | 
LI600C12
gunmetal |
|  | | |
| LI600C13
black + red | | |

Stealth 3

triple-jet flame
wind resistant
blue fuel window
easy-to-use flame adjuster
altitude tested 10,000 ft. (3,048 m)
leather holster size: extra large



LI900T1

metallic black
+ black



LI900T3

brilliant red
+ black



LI900T4

brilliant blue
+ black



LI900T7

metallic charcoal
+ black



QTR115001

black
+ polished chrome



QTR115005

black
+ gunmetal



QTR115006

black
+ rose



QTR115009

gunmetal
+ black



QTR115010

black
+ matte gunmetal

Monaco [metallic]

triple-jet flame
wind resistant
slide ignition blue fuel window
metallic finishes
altitude tested 9,000 ft. (2,743 m)
leather holster size: large



LI880T5

metallic black



LI880T6

metallic charcoal



LI880T7

metallic red



LI880T8

metallic blue



LI880T10

black carbon fiber



LI880T11

silver carbon fiber



LI880T12

red carbon fiber

Monaco [carbon fiber]

triple-jet flame
wind resistant
slide ignition blue fuel window
carbon fiber print
altitude tested 9,000 ft. (2,743 m)
leather holster size: large



LI880T13

blue carbon fiber

Slide

NEW

double-jet flame
wind resistant
unique slide-up single-action ignition
retractable slide-out 7mm punch
blue fuel level window
altitude tested 10,000 ft. (3,048 m)
leather holster size: large



LI850T10
black



LI850T11
black
+ chrome



LI850T12
gunmetal
+ black



LI850T13
black
+ rose



LI850T14
black
+ red



LI850T15
black
+ blue



LI850T16
black
+ green

SINGLE-JET FLAME LIGHTERS



Daytona [graphic camo pattern]

single-jet flame
wind resistant
altitude tested up to 12,000 ft. (3,657 m)
single-action ignition
tall blue fuel window
50% more fuel capacity than average
easy-to-use fuel wheel
leather holster size: large



LI770T80
gray



LI770T81
red



LI770T82
orange



LI770T183
blue

Daytona

single-jet flame
wind resistant
altitude tested up to 12,000 ft. (3,657 m)
single-action ignition
tall blue fuel window
50% more fuel capacity than average
easy-to-use fuel wheel
leather holster size: large



LI770T1

metallic black
+ black



LI770T2

brushed gunmetal
+ black



LI770T3

brushed chrome
+ black



brilliant red
+ black



LI770T5

brilliant blue
+ black



LI770T6

neon green
+ black



LI770T7

neon yellow
+ black



LI770T8

neon orange
+ black

90 Year Anniversary Rally

single jet flame
wind resistant
single-action slide ignition
tall blue fuel window
easy-to-use fuel wheel
altitude tested up to 8,000 (2,438m)
leather holster size: large



LI360T91

gunmetal



LI360T92

red
+ gunmetal



LI360T93

blue
+ gunmetal



LI360T94

black
+ gold

Rally

single-jet flame
wind resistant
single-action slide ignition
tall blue fuel window
easy-to-use fuel wheel
altitude tested up to 8,000 (2,438m)
leather holster size: large



LI360T1

black + black



LI360T2

polished chrome
+ black



LI360T3

brushed gunmetal



LI360T4

black + red



LI360T5

black + blue



LI360T6

black + rose

Apex

single-jet flame
wind resistant
single-action slide ignition
tall blue fuel window
easy-to-use fuel wheel
leather holster size: large



LI410T1
metallic black



LI410T2
metallic charcoal



LI410T3
brilliant red



LI410T4
brilliant blue



LI410T5
neon orange



LI410T6
neon green

EVO

angled single-jet flame
wind resistant
altitude tested up to 12,000 ft. (3,657 m)
single-action ignition
tall blue fuel window
50% more fuel capacity than average
easy-to-use fuel wheel
leather holster size: large



LI520C1
black + black



LI520C2
black + brilliant red



LI520C3
black + brilliant blue



LI520C4
black + polished chrome



LI520C5
black + polished rose



LI520C6
brushed gunmetal

Falcon [metallic]

angled single-jet flame
wind resistant
single-action ignition
blue fuel level window
altitude tested 10,000 ft. (3,048 m)
leather holster size: large



LI310T10
metallic black



LI310T11
metallic charcoal



LI310T12
metallic red



LI310T13
metallic blue

Julius

double soft flame
oversized roller bar
flint ignition
easy-to-use touch fuel adjuster
altitude tested 12,000 ft. (3,658 m)
leather holster size: large



LI221C1
black + black



LI221C2
black + polished chrome



LI221C3
black + polished gold



LI221C9
brushed gunmetal

Pacific Air

re-engineered for increased reliability to near 100% fire rate
altitude tested up to 9,000 ft. (2,743 m)
side-mounted flame
easy-to-use fuel wheel
integrated pipe tool



LI400C5
matte black
+ polished chrome



LI400C6
brushed chrome
+ polished chrome



LI400C7
matte black
+ brushed gunmetal



LI400C8
brushed gunmetal
+ matte black



LI400C9
matte black
+ polished rose

Allure

ladies' soft flame lighter
single-action ignition
altitude tested up to 8,000 ft. (2,438 m)
crystal accents
easy-to-use flame adjuster



LI143C1
black
+ polished chrome



LI143C2
metallic silver
+ polished chrome



LI143C3
white
+ polished rose



LI143C4
polished chrome
+ pink crystals



LI143C6
polished gold
+ white crystals

Sherlock

pocket-knife-style pipe tool
durable all-metal construction
multi-tool (tamper, reamer, scraper)
key ring



PT100C1
black lacquer
+ polished chrome



PT100C2
brushed chrome
+ polished chrome



PT100C4
red lacquer
+ polished chrome

CIGAR CUTTERS

In a quest for the perfect cut of a caliber worthy of the finest world-class cigar, we have engineered some of the best cutting instruments to ever shear the cap of any cigar. Finely honed stainless steel blades perfectly prepare your cigar to your draw preference — be a straight cut, a v-cut or a punch cut. Engineered with acute attention to ergonomics, functionality and efficacy, each of our cigar cutters feels like a mechanical extension of your own hand — and a requisite companion to your Colibri cigar lighter.



Quasar

table cutter with
hands-free pop-up action
two-in-one V-Cut + S-Cut
deep V-Cut cuts up to 60 ring
S-Cut cuts up to 68-ring
unique Quasar design
holds trimmings inside



CU700T1
matte black



CU700T2
metallic silver



CU700T3
metallic gunmetal



CU700T4
matted red

SV-Cut

two-in-one V-Cut + S-Cut
deep V-Cut cuts up to 60 ring
S-Cut cuts up to 68-ring
pachmayr pattern body for sure grip
spring loaded release
leather holster size: extra large



CU600T1
matte black
+ rubberized black



CU600T2
matte black
+ polished chrome



CU600T3
polished chrome
+ rubberized black



CU600T4
polished gunmetal
+ brushed gunmetal



CU600T5
polished rose
+ rubberized black

Quasar Cut

unique skeleton blades
62 ring gauge—cuts up to 66 ring
stainless steel blades
spring-loaded release
ergonomic design
leather holster size: large



CU100T70
metallic black



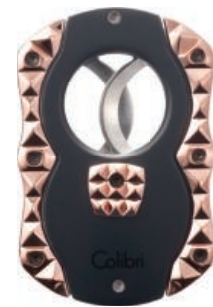
CU100T71
metallic charcoal



CU100T72
metallic silver



CU100T73
black
+ chrome



CU100T74
black
+ rose



CU100T75
matte red



CU100T76
blue



CU100T77
neon green

Cut [camo]

graphic camo pattern
black color-coated blades
62 ring gauge—cuts up to 66 ring
stainless steel blades
spring-loaded release
ergonomic design
leather holster size: large



CU100T80
grey



CU100T81
red



CU100T82
orange



CU100T83
blue

Cut [color blades]

color-coated blades (modified organic silicon,
non-stick, dirt-resistant and easy-to-clean)
62 ring gauge—cuts up to 66 ring
stainless steel blades
spring-loaded release
ergonomic design
rubberized for grip
leather holster size: large



CU100T20
rubberized black
+ black blades



CU100T21
rubberized black
+ red blades



CU100T22
rubberized black
+ orange blades



CU100T24
rubberized black
+ blue blades



CU100T26
rubberized black
+ green blades

NEW

90 Year Anniversary V-Cut

spring-loaded release
V-shaped cutter
ergonomic design
stainless steel blade
leather holster size: large



CU300T92
red
+ gunmetal



CU300T93
blue
+ gunmetal

V-Cut [carbon fiber print]

cuts up to 60 ring
7mm deep v-cut
420 stainless steel blade
spring-loaded release
leather holster size: large



CU300T20
black carbon fiber



CU300T22
red carbon fiber



CU300T23
blue carbon fiber

V-Cut

cuts up to 60 ring
7mm deep V-Cut
420 stainless steel blade
spring-loaded release
leather holster size: large



CU300T1
rubberized black
+ black



CU300T2
rubberized black
+ red



CU300T3
rubberized black
+ blue



CU300T4
rubberized black
+ brushed chrome



CU300T5
rubberized black
+ brushed gold



CU300T6
rubberized black
+ brushed rose

S-Cut [serrated]

61 ring gauge—cuts up to 66 ring cigar
420 stainless steel blade
spring-loaded release
leather holster size: large



CU560T1
black
+ black



CU560T2
chrome
+ black



CU560T3
gunmetal



CU560T4
rose
+ black

S-Cut

61 ring gauge—cuts up to 66 ring cigar
 420 stainless steel blade
 spring-loaded release
 leather holster size: large



CU500T1
 rubberized black
 + black



CU500T2
 rubberized black
 + red



CU500T3
 rubberized black
 + blue



CU500T4
 rubberized black
 + brushed chrome



CU500T6
 rubberized black
 + brushed rose

Quasar Punch

three-in-one punch
 7mm, 9mm, 12mm
 stainless steel blades
 all metal construction



CU410T1
 metallic black



CU410T2
 metallic silver



CU410T3
 metallic charcoal



CU410T4
 matte red

S-Cut [with ez-cut back]

closed back design for an easy 2.0mm cut
 61 ring gauge—cuts up to 66 ring cigar
 420 stainless steel blade
 spring-loaded release
 leather holster size: large



CU550T1
 rubberized black
 + brushed gunmetal

Gift Sets

gift set box included



90 Year V-Cut + Rally

GS300T92 gunmetal + red
GS300T93 gunmetal + blue



Stealth 3 + V-Cut

GS900T1 black + black
GS900T2 red + red
GS900T3 blue + blue
GS900T4 charcoal + brushed chrome



Rally + SV-Cut

GS360T01 black + black
GS360T02 gunmetal
GS360T03 black + rose



Monaco + V-Cut

GS880T01 black CF
GS880T03 red CF
GS880T04 blue CF



Apex + Quasar Cut

GS410T1 black + black
GS410T2 charcoal + charcoal



Daytona + Cut [camo]

GS770T1 gray
GS770T2 red
GS770T3 orange
GS770T4 blue



Daytona + Quasar Cut

GS700T10 black + black
GS700T11 green + green



Daytona + Cut [color blades]

GS700T5 black + black
GS700T6 red + red
GS700T7 blue + blue
GS700T9 orange + orange



EVO + S-Cut [serrated]

GS520C1 black + black
GS520C2 chrome + chrome
GS520C3 rose + rose
GS520C4 gunmetal + gunmetal

Leather Holster

genuine calf skin leather carrying case
helps protect lighters + cutters from scratches
recommended for current + vintage models
easy-removal pull-tab design
sturdy stitch construction with inner lining
available in two sizes



LC100CL

large

LC100CXL

extra large

Premium Butane

The cleanest butane available. 99.999% Pure

- Will not taint the flavor of your premium cigar or fine tobacco
- Formulated for Colibri to prevent misfires & malfunctions
- Five nozzle adapters built into the cap on 300ml cans
- Recommended for all refillable butane-fueled lighters



300mL

16 dozens (master) X19230BU
12 dozens (gross) X14430BU
1 dozen X11230BU

Europe 350mL + 50mL free
1 dozen BUC400P

90mL

12 dozens (gross) X14409BU
6 dozens X17209BU
1 dozen X11209BU

Europe 90mL
1 dozen X21209BU

Premium Flints

premium black ferrous flints
10 premium flints per convenient hard pack
30 hard packs per display
up to 700 strikes per flint
25% more strikes than average flint
less residual dust than average flint
recommended for all flint spark lighters



30-count self display FL100C30

Heritage Humidor

NEW

Heritage [14" wide]
 designed in London
 cedar lining
 magnetic movable humidification
 digital hygrometer
 two adjustable dividers
 105-125 count capacity
 14" x 10" x 6" (360 x 250 x 150 mm)



Humidor

Quasar Ashtray

six-finger cigar ashtray
 unique 3D design
 heat-resistant
 metal alloy construction
 non-slip rubber foot pads
 hand-washable
 10" x 8" x 2" (254 x 203 x 51 mm)



AT100T1
matte black



AT100T2
metallic silver



AT100T3
metallic charcoal



AT100T4
matte red

Ashtrays

Windsor Ashtray

wooden ashtray
 washable 5" (127mm) stainless steel tray
 removable cigar stand/holder
 felt-lined lighter/cutter recesses
 two corner positions
 9.5" x 5.75" x 1.6" (240 x 146 x 40 mm)



AT200C1
black wood



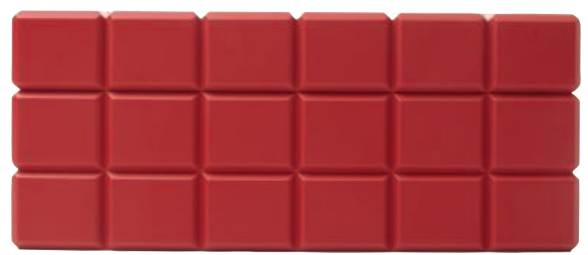
AT200C2
brown wood



removable cigar stand/holder



black



HU500T2
red



HU500T3
grey

72-piece Floor Spinner

three-sided floor spinner
72 facings
locking upper + lower levels
locking storage cabinet



Z10016FS
16.5" (w) x 17.0" (d) x 62.5" (h)
419mm (w) x 432mm (d) x 1,588mm (h)

36-piece Counter Spinner

three-sided on counter spinner
36 facings + locking door



Z10016CS
17" (w) x 15" (d) x 21" (h)
432mm (w) x 381mm (d) x 534mm (h)

On-counter Display

elegant wood grain finish
glass top
pull out tray
locking case



Z10011CD
15" (w) x 9.5" (d) x 6.1" (h)
381mm (w) x 241mm (d) x 155mm (h)

Under-counter Display

lightweight for easy handling
holds 12 lighters and/or cutters



Z10011UD
15" (w) x 8.75" (d) x 1.75" (h)
381mm (w) x 222mm (d) x 44mm (h)

Lighter + Cutter Display

stadium seating for clear viewing
two magnetic positions on header
easy two-piece assembly
can also display lighters



Z10014CU
11.0" (w) x 10.5" (d) x 9.0" (h)
280mm (w) x 270mm (d) x 240mm (h)

8-pc. Lighter + Cutter Stand

lightweight for easy handling
holds 8 lighters or cutters



Z10016LI
7.9" (w) x 5.6" (d) x 2" (h)
200mm (w) x 143mm (d) x 51mm (h)



Quasar Table Lighter [p.5]

Quantum [p.6]



Falcon [metallic] [p.15]



Julius [p.15]



Boss [p.7]

Quasar Astoria [p.7]

Stealth 3 [p.8]



Pacific Air [p.16]



Sherlock [p.16]



Allure [p.17]



Enterprise 3 [p.8]



Monaco [metallic] [p.9]



Quasar Table Cutter [p.19]

SV-Cut [p.19]



Monaco [carbon fiber] [p.9]



Slide [p.10]



Quasar Cut [p.20]



Daytona [camo] [p.11]



Cut [camo] [p.21]



Cut [color blades] [p.21]



Daytona [p.12]



90 Year Anniversary V-Cut [p.22]

V-Cut [carbon fiber] [p.22]

V-Cut [p.23]



90 Year Anniversary Rally [p.13]

Rally [p.13]



S-Cut [serrated] [p.23]



S-Cut [p.24]

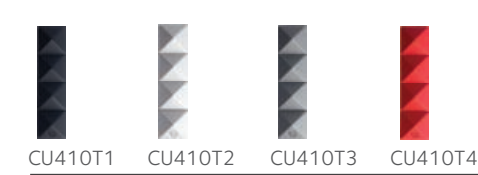


S-Cut [ez-cut] [p.24]



Apex [p.14]

EVO [p.14]



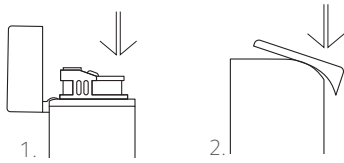
Quasar Punch [p.25]

LIGHTER OPERATING INSTRUCTIONS

Please visit Colibri.com for complete instructions regarding your particular lighter model. The following general instructions apply to most Colibri lighters.

IGNITION

To ignite, open cover of lighter and press ignition. To extinguish, release ignition switch and close cover (see Fig.1). Note, some Colibri lighter models have a single-action, automatic cover that opens and closes with the pressing and releasing of the ignition (see Fig.2). For flint lighters, open cover and turn roller bar clockwise. **WARNING:** Flint lighters do not self-extinguish; close cover to put out.



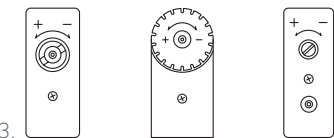
REFILLING/EMPTYING

CAUTION

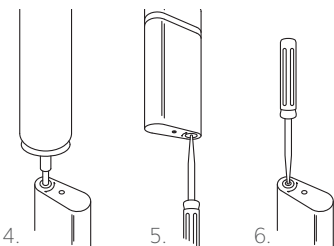
- Refill/empty only in a well ventilated area.
- Never attempt to refill or empty near any heat source, sparks or flame.
- No smoking during refilling or emptying.
- Be careful not to activate the ignition system during refilling or emptying.
- Keep the lighter cover closed.
- NEVER ATTEMPT TO IGNITE THE LIGHTER DURING REFILLING OR EMPTYING.
- Take precautions against static charges.
- Read warnings on butane refill canister.
- Hold away from face when refilling or emptying.

1 All air should be removed from gas tank in order to refill to maximum capacity. Hold lighter in vertical position and depress filler valve with ballpoint pen or small screwdriver until hissing stops (see Fig.5).

2 Set the flame adjuster to lowest position (-). See Fig.3 for diagrams of three types of adjusters.



3 Refill lighter in upside down position (see Fig.4).

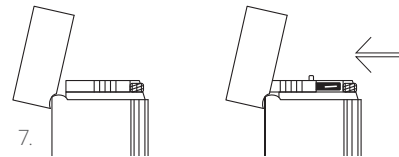


- 4 Press nozzle tip on valve. Press down firmly for 5 seconds.
- 5 To check if tank is full, hold lighter in vertical upside down position and depress filler valve with ballpoint pen or small screwdriver (see Fig.6). If liquid is expelled, stop immediately: the tank is filled to capacity. If your lighter features a fuel level viewing window, a small air bubble will be visible even when tank is full (for safety, lighter gas tanks accept only 85% liquid butane capacity).
- 6 Warm lighter in hand for 10 seconds. Wait 2 minutes before igniting. This will allow excess butane to evaporate, and lighter to reach room temperature. If a hissing sound is heard, do not attempt to ignite. Return for service.
- 7 Rotate flame-height adjuster 1/4 turn (+).
- 8 Ignite and adjust flame to desired height. If you have a problem refilling your lighter, empty tank and repeat steps 1 through 7.

FLINT REPLACEMENT

Flint lighters ignite by means of a serrated wheel striking a piece of flint. To avoid damage to wheel by metal flint pusher, flint should be replaced before completely exhausted. For optimum performance, occasionally clean the serrated wheel with a stiff non-metal brush. Always use Colibri Premium Flints. They are sized and hardened for optimum performance. Flints of unknown size and hardness may damage spark wheel, resulting in need for service.

- 1 Depending on type of lighter, remove flint screw or slide flint compartment cover back until lock button pops up (see Fig. 7).
- 2 Remove old flint. Tap lighter on hard surface to remove flint particles.
- 3 Insert new Colibri flint into slot.
- 4 Replace flint screw or press lock button.



CARE AND HANDLING

- For long-term reliability, clean burner chamber periodically with compressed air to keep burner chamber free of dust and carbon build-up which may affect performance of lighter.
- To avoid damage, tip of compressed air canister must be kept at least 1" from top of burner.
- Deliver three short bursts of air into burner.
- Let lighter reach room temperature before igniting.
- Should flame begin to flicker in normal use, it indicates lighter needs refilling.
- To keep lighter looking as new, prevent contact with keys, coins or other objects that might scratch surface of lighter. Sweat, perfume, solvents and alcoholic substances may also damage surface of lighter.
- If lighter is not to be used for a long period of time, flame adjuster should be set to maximum (+). When lighter is in use again, readjust to desired height.

IMPORTANT

Be sure to use Colibri Premium Butane, which is specifically designed to prevent malfunctions, misfires and clogging of the butane feeding system, affecting performance of the lighter.

WARNING

KEEP AWAY FROM CHILDREN

- Ignite lighter away from face and clothing.
- Be sure flame is out after use.
- Contains flammable gas under pressure.
- Never expose to heat above 120°F (49°C) or to prolonged sunlight.
- Never puncture or put in fire.
- Extreme heat is present above the visible flame. Extra care should be taken to prevent burn injury or fire.
- Do not keep lit for more than 10 seconds.
- Exercise care in use.
- Never leave lighter on the dashboard or rear window of vehicle.
- Under no circumstance should the user tamper with the lighter or attempt to adjust other than by using the controls provided.
- Failure to follow instructions can result in serious personal injury.

CUTTING AND PUNCHING

Be careful when using cutters or punches: blades are extremely sharp. **WARNING:** Keep away from children.

Guillotine/Double-Guillotine: Fold out cutter. Place cigar head in cutter opening and slide blade(s) to cut.

Punch: Depending on lighter model, fold out punch or slide punch out of case and lock into place. Firmly press against end of cigar.

TROUBLESHOOTING GUIDE

SYMPTOM	PROBABLE CAUSE	SOLUTION
Lighter will spark but not ignite	Out of fuel	Refill lighter
	Air lock	Empty lighter (see Refilling/Emptying section)
	Dirty burner	Clean burner (see Care & Handling section)
	Flame adjuster set too low	Raise flame adjuster
	High altitude	Raise flame adjuster
	Low temperature	Raise flame adjuster
	Gas feeding system clogged	Return for service
Lighter will not spark	Ignition system malfunction	Return for service
Hissing sound is heard	Butane leak	Return for service
	Flame adjustment too high	Lower flame adjustment

WARRANTY INFORMATION (LIGHTERS AND CUTTERS)

Two-Year International Lighter Warranty

For two years from the date of original retail purchase, Colibri warrants the mechanism of your Colibri lighter or cutter to be free from mechanical defects under normal use according to the operating instructions. This warranty does not apply to the outer finish of your lighter or cutter. In case of any mechanical defects please contact your local Colibri retailer. Colibri offers this warranty in lieu of all other express warranties.

COLIBRI QUASAR HUMIDOR CARE AND WARRANTY

To maintain warranty, please follow the instructions below:

- Remove the black DM Regulator from the lid of your humidor.
- Drip into the regulator approximately one ounce (half of the two ounce bottle or a quarter of the four ounce bottle) of the DM Special Care Solution to charge the regulator.
- Fill the regulator with approximately one ounce of distilled water.
- To maintain humidity, fill the regulator approximately every 4-6 weeks with one ounce of distilled water.
- Every six months, add one ounce of the DM Special Care Solution to maintain and recharge the regulator.

If you would like to increase the humidity in your humidor, continue to add distilled water in approximately one ounce increments, until your cigars reach your preferred firmness/softness. Allow three days or so after each additional ounce of water added to allow the humidor to stabilize.

If you would like to decrease the humidity in the humidor, you can add more of the Special Care Solution in increments of one ounce. The solution's purpose is to regulate the humidity in your humidor by inhibiting the rate at which the water evaporates.

For those special cigars that you want to age and keep for a period of time, we recommend keeping the cigars on the firm side with humidity between 65% and 70%.

It will take approximately 10 to 20 days for your humidor to become fully conditioned. The wood absorbs moisture for about two weeks. Once this break in period is complete, your humidor will lock in the humidity and create a stable environment for your cigars. You may put your new humidor to use immediately.

We do not recommend wiping the interior of the humidor (the Spanish cedar) with water as some may suggest to you. We carefully sand smooth the interiors of all our humidors in order to create a completely natural environment for your cigars. Wiping the interior with water will "lift the grain" of the wood making the surface rough and possibly create surface "checking" of the wood.

Hygrometer

The digital hygrometers we install are the highest quality meters made. We advise you to use the meter as a reference point to tell you when you may need to charge your regulator. The meter cannot be calibrated.

Exterior Surface Cleaning

To clean the exterior of your humidor as we do in our factory, I recommend gently wiping it with cotton and rubbing (70%) alcohol to remove any finger prints or debris. Please keep your humidor in a cool as possible place out of any direct sunlight.

Caution: Do not forget to re-charge the regulator every 6 months with only the DM Special Care Solution and do not fully saturate the regulator with water as this can cause over humidification and create the potential for marks on the wood to develop.



Colibri
1928

www.colibri.com